

Boardwalk

# Park Place

EASTVILLE, BRISTOL

## Park Place EASTVILLE

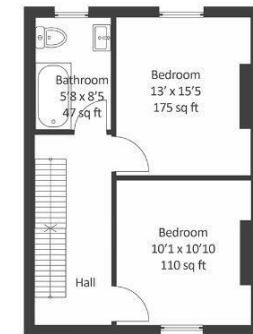
APPROXIMATE FLOOR AREA  
106 SQM / 1140 SQFT



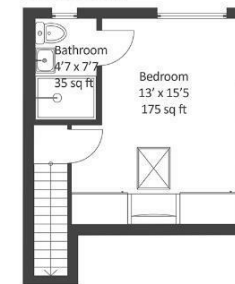
GROUND FLOOR



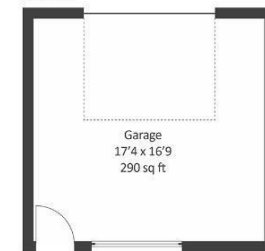
FIRST FLOOR



SECOND FLOOR



GARAGE



Boardwalk

# Park Place

EASTVILLE, BRISTOL



£400,000



3 Bedrooms



BS5 6RG



2 Bathrooms

*"Living in this home has been a joy. We renovated it from the ground up, giving it a fresh life with thoughtful extensions, landscaping, and décor that really suits the space. In summer, the garden becomes our favourite place –flowering beds, barbecues, and relaxed evenings with friends. Having the park so close has been wonderful too, whether we're feeding the geese or wandering up to Snuff Mills. With Easton and Fishponds nearby, everything we need is within easy reach, and we've loved our evenings at The Star or The Greyhound—proper community pubs where everybody feels at home."*

